



Barrowell Green, Winchmore Hill, London, N21
£550,000 Freehold

Anthony Webb
ESTATE AGENTS

Barrowell Green, Winchmore Hill, London, N21

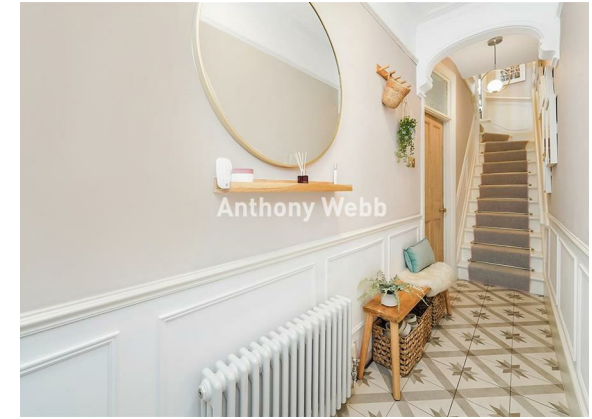
Stunning two double bedroom Victorian terrace house which has been renovated and presented to a very high standard by the current sellers.

Barrowell Green is a popular residential turning located off Green Lanes within easy walking distance of Winchmore Hill's shops, restaurants, bus routes and mainline station into Finsbury Park/Moorgate. There are several schools nearby including the outstanding Highfield Primary school, Firs Farm Primary school and Winchmore Secondary school. Green spaces are well catered for with a green/park directly behind the property and Firs Farm Wetlands a short walk away.

Tiled path leading to front door • Hallway with tiled floor, panelled walls and ceiling features • Spacious through lounge with bay window, wood parquet flooring and period style feature fireplaces • Modern fitted kitchen with wood parquet floor, solid work surfaces and double doors to garden • First floor landing with wood parquet floor, panelled walls, large storage cupboard and access to loft space with potential to convert • Two double bedrooms both with wood parquet floor, fitted wardrobes and period style feature fireplaces • Beautiful bath/shower room with tiled floor with underfloor heating • Double glazing • Gas central heating • Off street parking space • Landscaped rear garden with decked seating area, artificial lawn area and rear access gate.

Enfield Council Tax Band D

- Two double bedrooms
- Victorian terrace house
- Through Lounge
- Modern kitchen
- First floor modern bath/shower room
- Double glazing/gas central heating
- Off street parking
- Rear garden





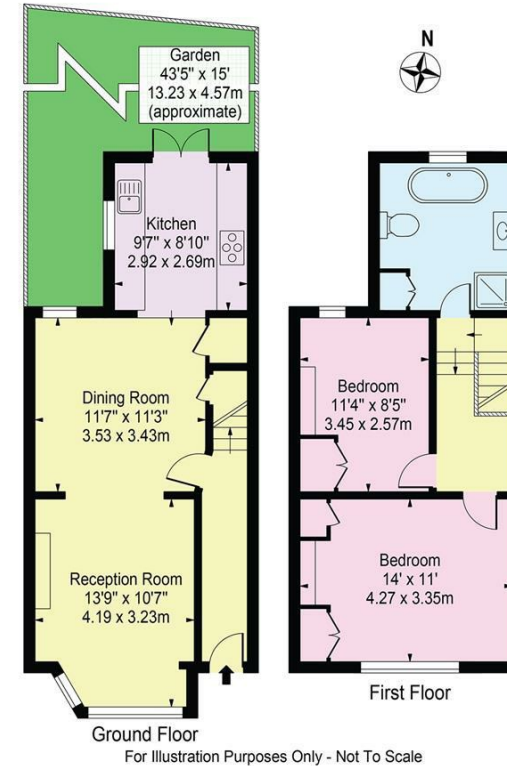
Barrowell Green Winchmore Hill London N21 3AU

Tenure: Freehold
Gross Internal Area: 839.00 sq ft



Energy Efficiency Rating		Current	Potential
Very energy efficient - lower running costs			
(92 plus) A			89
(81-91) B			
(69-80) C		67	
(55-68) D			
(39-54) E			
(21-38) F			
(1-20) G			
Not energy efficient - higher running costs			
England & Wales		EU Directive 2002/91/EC	
Environmental Impact (CO ₂) Rating		Current	Potential
Very environmentally friendly - lower CO ₂ emissions			
(92 plus) A			
(81-91) B			
(69-80) C			
(55-68) D			
(39-54) E			
(21-38) F			
(1-20) G			
Not environmentally friendly - higher CO ₂ emissions			
England & Wales		EU Directive 2002/91/EC	

Barrowell Green, N21 3AU
Approx. Gross Internal Area 839 Sq Ft - 77.95 Sq M



This floor plan should be used as a general outline for guidance only and does not constitute in whole or in part an offer or contract. Any intending purchaser or lessee should satisfy themselves by inspection, searches, enquiries and full survey as to the correctness of each statement. Any areas, measurements or distances quoted are approximate and should not be used to value a property or be the basis of any sale or let.

Property particulars as supplied by Anthony Webb Estate Agents are set out as a general outline in accordance with the Property Misdescriptions Act (1991) only for the guidance of intending purchasers of lessees, and do not constitute any part of an offer or contract. Details are given without any responsibility, and any intending purchasers, lessees or third parties should not rely on them as inspection or otherwise as to the correctness of each of them. We have not carried out a structural survey and the services, appliances and specific fittings have not been tested. All photographs, measurements, floor plans and distances referred to are given as a guide only and should not be relied upon for the purchase of carpets or any other fixtures statements or representations of fact, but must satisfy themselves by or of fittings, gardens, roof terraces, balconies and communal gardens as well as tenure and lease details cannot have their accuracy guaranteed for intending purchasers. Lease details, service ground rent (where applicable) are given as a guide only and should be checked and confirmed by your solicitor prior to exchange of contracts. no person in the employment of Anthony Webb has any authority to make any representation or warranty whatever in relation to this property.

348 Green Lanes, Palmers Green, London N13 5TJ
020 8882 7888
palmersgreen@anthonywebb.co.uk
anthonywebb.co.uk

Anthony Webb
ESTATE AGENTS